

11. september 2017

Vikubyrjun – Innlendar markaðsupplýsingar

Hagfræðideild Landsbankans

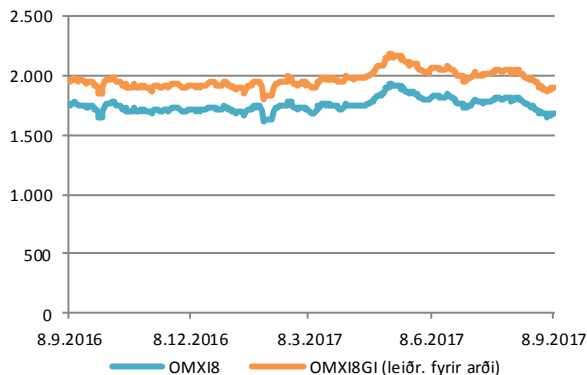


Hlutabréf

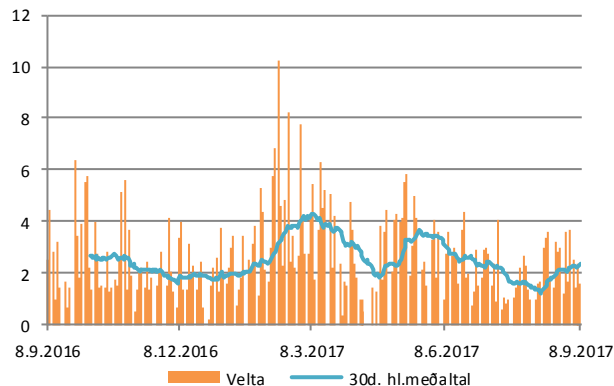
Félag	Verð	Velta (ma.kr./viku)	Breyting síðan ...					
			áramót	1V	1M	3M	6M	12M
OMX18	1679,69	9,2	-1,8%	0,5%	-5,7%	-7,8%	-1,3%	-3,6%
OMX18GI	1897,50		-0,7%	0,5%	-5,7%	-7,8%	-0,6%	-2,5%
Marel	342,00	1,8	41,8%	0,3%	-7,1%	-2,1%	7,5%	38,4%
Icelandair	15,45	1,0	-32,6%	4,4%	12,0%	12,0%	9,7%	-39,9%
Össur	480,00	0,0	21,1%	-4,0%	-6,0%	2,2%	22,7%	11,2%
Eimskip	265,00	0,3	-16,5%	1,2%	-15,0%	-18,1%	-12,5%	-13,0%
HB Grandi	34,35	0,3	36,4%	8,0%	6,3%	21,8%	12,6%	12,3%
Hagar	35,50	0,7	-34,3%	0,6%	-2,7%	-25,3%	-24,5%	-29,0%
N1	110,00	0,6	-12,6%	-2,7%	-2,2%	-2,7%	-4,0%	7,6%
Skeljungur	6,40	0,1	-5,5%	1,7%	19,6%	5,3%	6,1%	
Fjarskipti	59,70	0,3	17,1%	-1,2%	-5,2%	-1,3%	11,2%	23,9%
Síminn	3,80	0,8	22,3%	-2,4%	-8,0%	-11,4%	4,0%	26,8%
Nýherji	28,30	0,0	38,7%	-2,4%	-9,9%	-13,7%	-4,1%	62,6%
Sjóvá	15,80	0,3	15,8%	-0,9%	-12,0%	-16,8%	-5,1%	33,7%
VÍS	9,83	0,1	13,1%	-0,9%	-1,7%	-12,1%	0,9%	20,0%
TM	29,40	0,3	12,2%	-1,0%	-7,3%	-9,3%	-3,8%	24,1%
Reginn	23,95	0,7	-8,6%	-0,2%	-8,4%	-19,0%	-14,2%	-6,8%
Reitir	86,90	1,0	-5,6%	-0,9%	-10,6%	-16,8%	-5,7%	-6,5%
Eik	10,30	0,8	-1,5%	1,9%	-3,7%	-15,8%	-6,8%	-0,6%

Leiðrétt fyrir arðgreiðslum. Heimild: Kodiak, útreikningar Hagfræðideildar

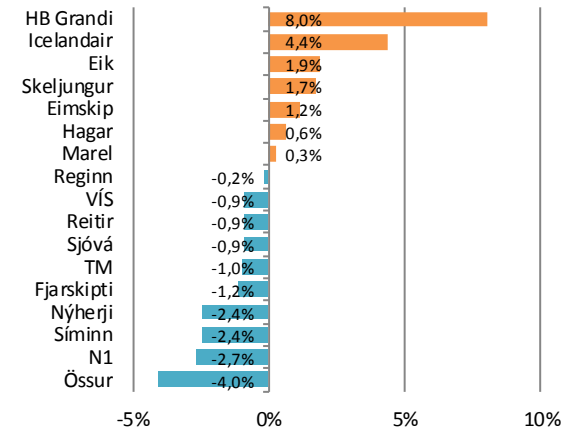
Úrvalsvísitalan



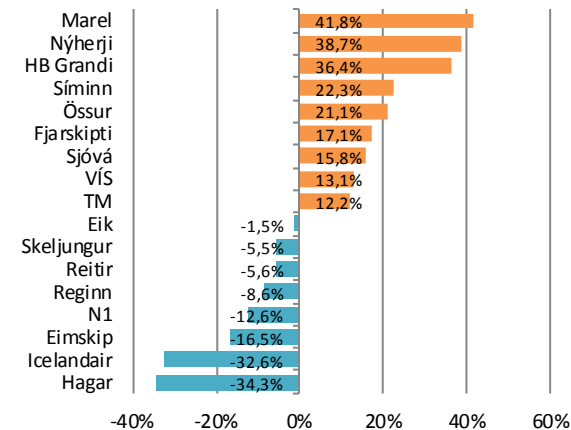
Velta



Breyting í vikunni



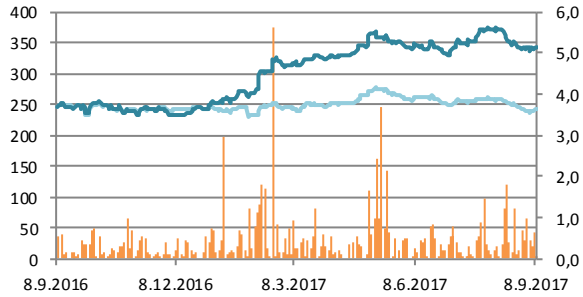
Síðan áramót



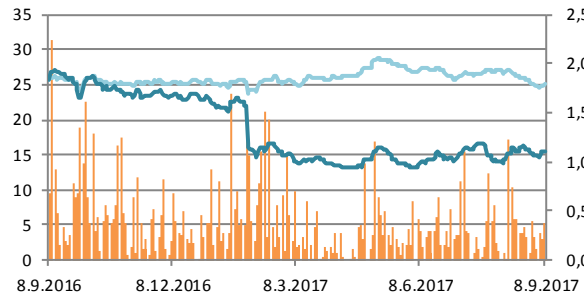
Hlutabréf

Velta (h.ás, ma.kr./dag) Verð OMXI8GI

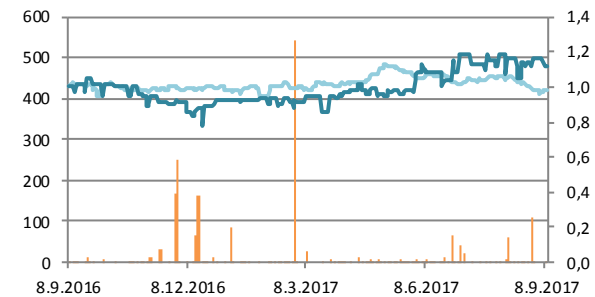
Marel



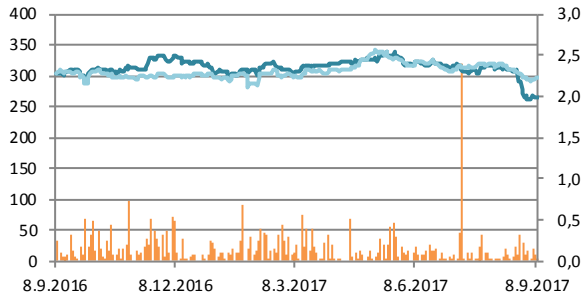
Icelandair



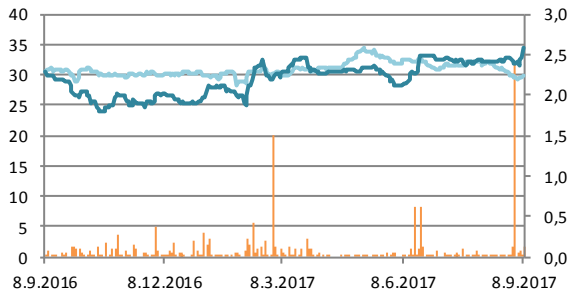
Össur



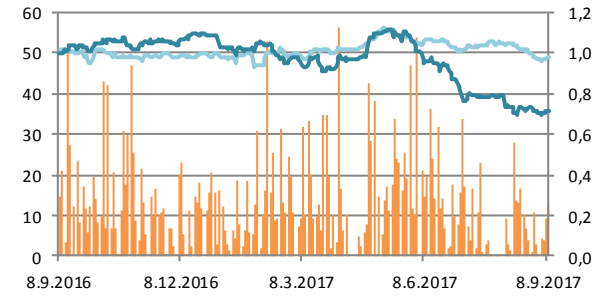
Eimskip



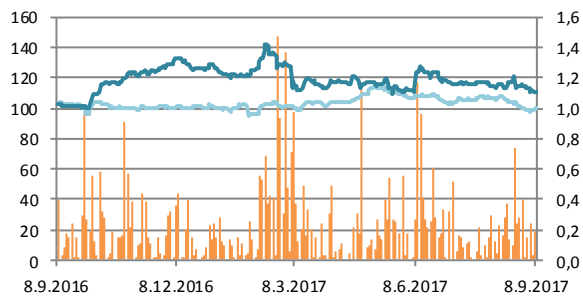
HB Grandi



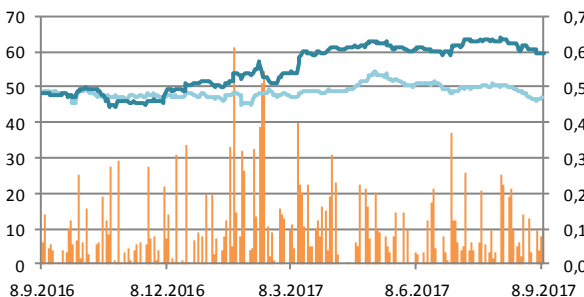
Hagar



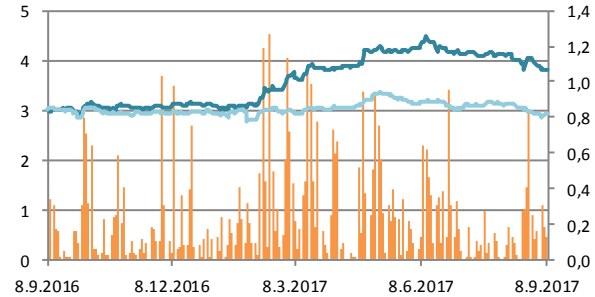
N1



Fjarskipti



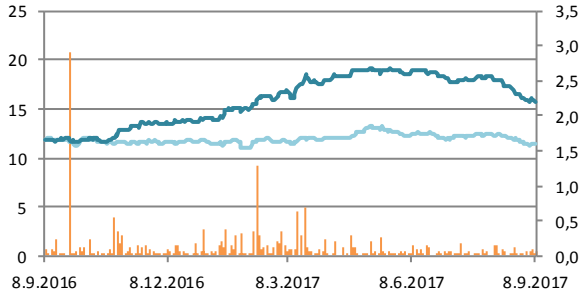
Síminn



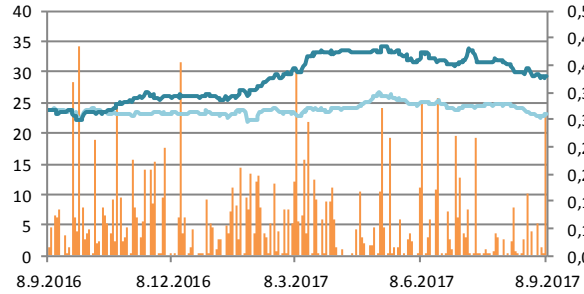
Hlutabréf

Velta (h. ás, ma.kr./dag) Verð OMXI8GI

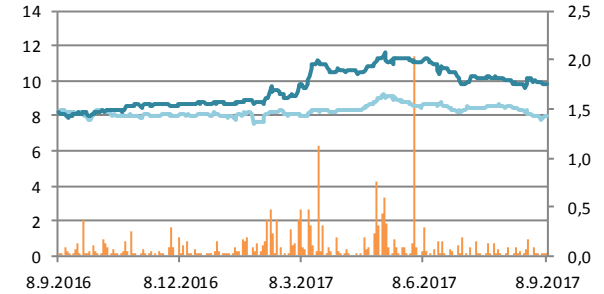
Sjóvá



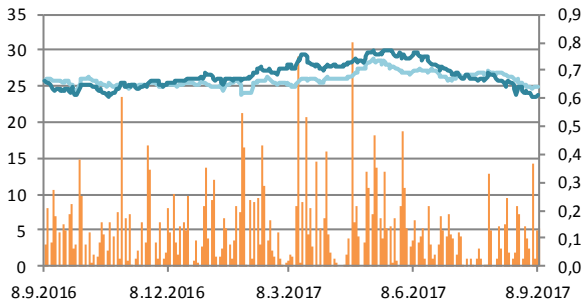
TM



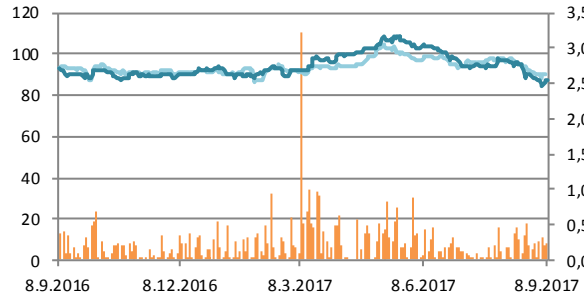
Vís



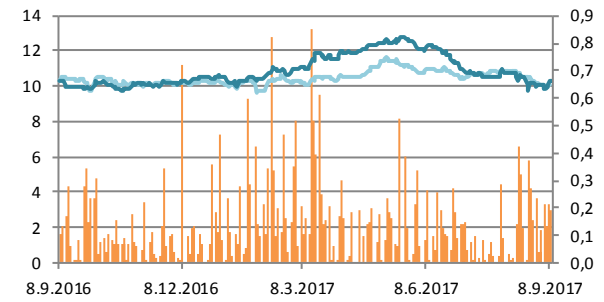
Reginn



Reitir



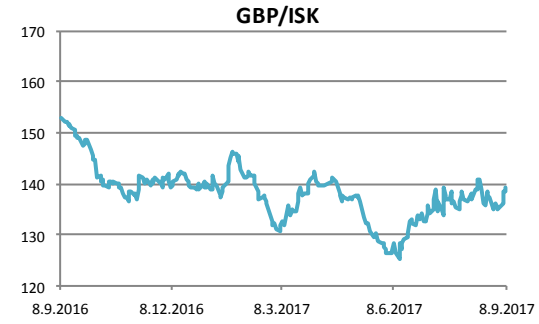
Eik



Gjaldeyrismarkaður

Gengi ISK	8.sep	Breyting síðan ...				
		1V	1M	3M	6M	12M
EUR	127,6	2,5%	3,1%	14,7%	10,9%	-1,2%
USD	105,7	1,2%	0,9%	6,8%	-2,9%	-7,5%
GBP	139,4	3,2%	2,1%	8,8%	5,2%	-8,7%
SEK	13,4	2,0%	3,9%	17,8%	10,7%	-1,8%
DKK	17,2	2,5%	3,1%	14,7%	10,8%	-1,1%
NOK	13,7	1,8%	3,2%	17,2%	6,4%	-2,7%
CHF	111,8	2,7%	3,8%	9,1%	4,0%	-5,4%
JPY	0,98	3,7%	3,8%	9,4%	3,0%	-12,6%

Miðgengi Seðlabanka Íslands. Heimild: Kodiak



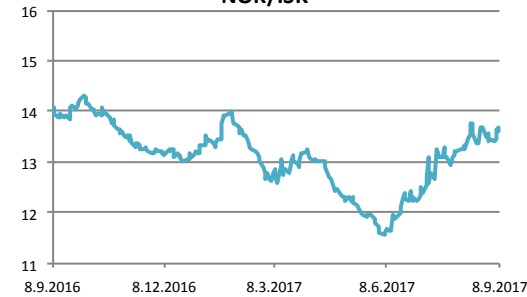
EUR/ISK



SEK/ISK



NOK/ISK



CHF/ISK



JPY/ISK

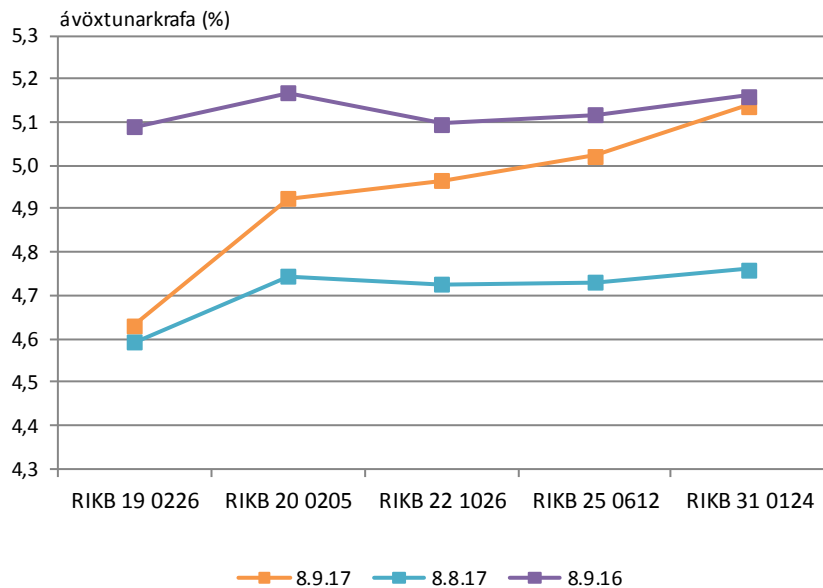


Ríkisbréf

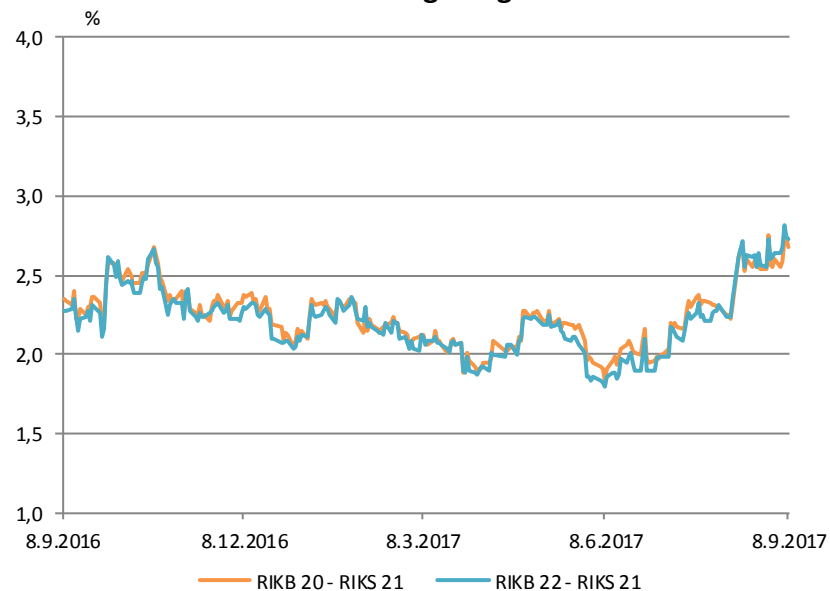
	verð	krafa	velta (ma.kr./viku)	Breyting á kröfu síðan ...				
				1V	1M	3M	6M	12M
RIKB 19 0226	105,63	4,63	0,7	-0,01	0,04	-0,01	-0,25	-0,46
RIKB 20 0205	102,90	4,92	1,7	0,06	0,18	0,32	-0,02	-0,25
RIKB 22 1026	110,09	4,97	2,8	0,06	0,24	0,41	0,03	-0,13
RIKB 25 0612	118,69	5,02	2,4	0,06	0,29	0,47	0,09	-0,09
RIKB 31 0124	112,90	5,14	0,7	-0,02	0,38	0,61	0,20	-0,02
RIKS 21 0414	105,30	2,24	1,9	-0,02	-0,25	-0,53	-0,59	-0,57

Heimild: Kodiak

Vaxtaferlar

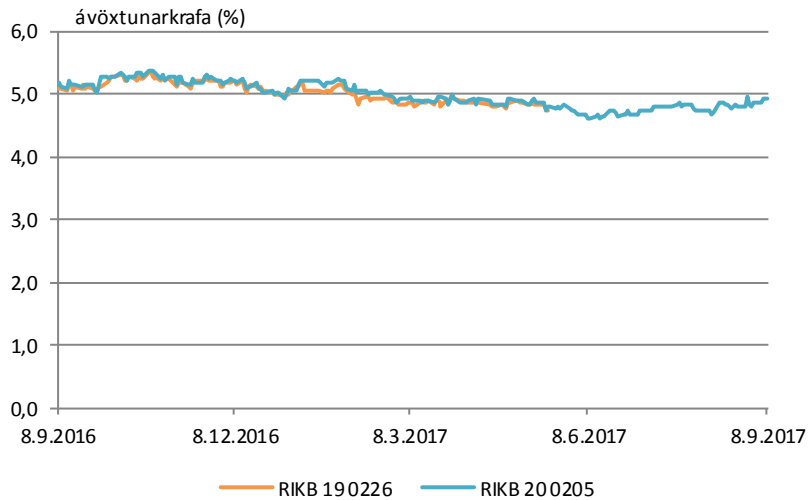


Verðbólguálag

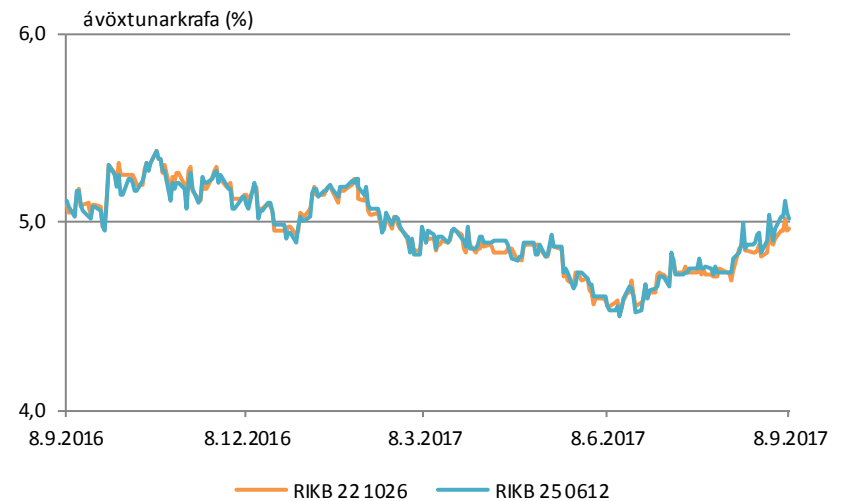


Ríkisbréf

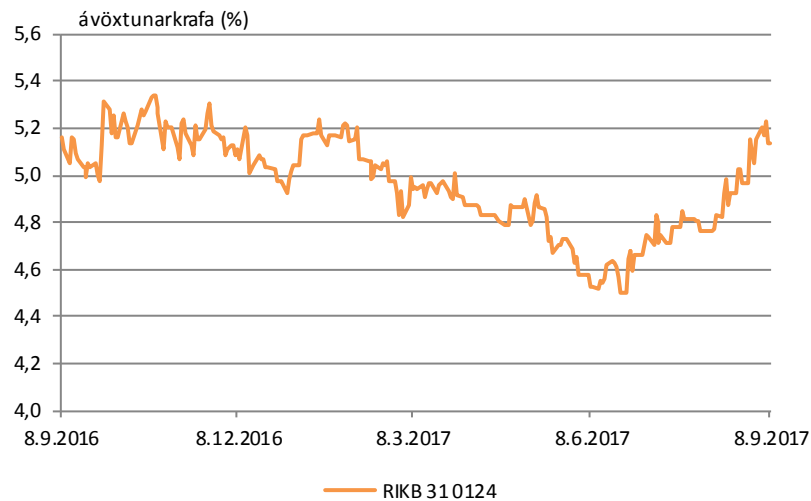
Stutt ríkisbréf



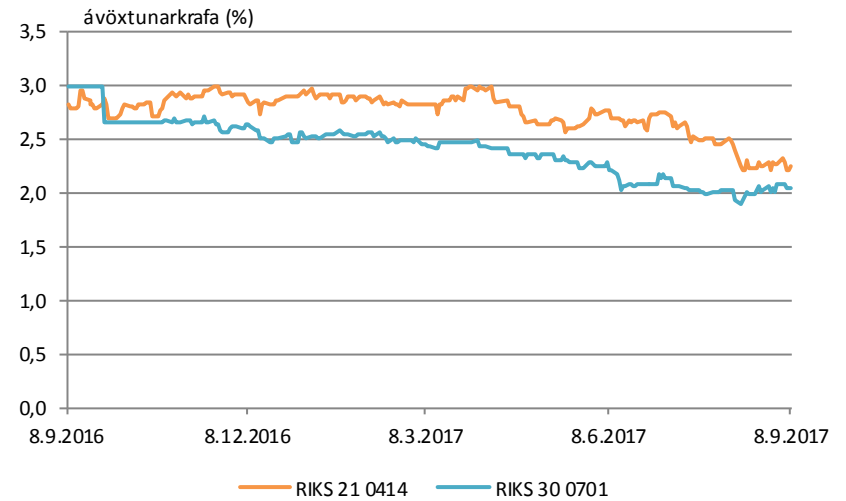
Millilöng ríkisbréf



Löng ríkisbréf



Verðtryggð ríkisbréf

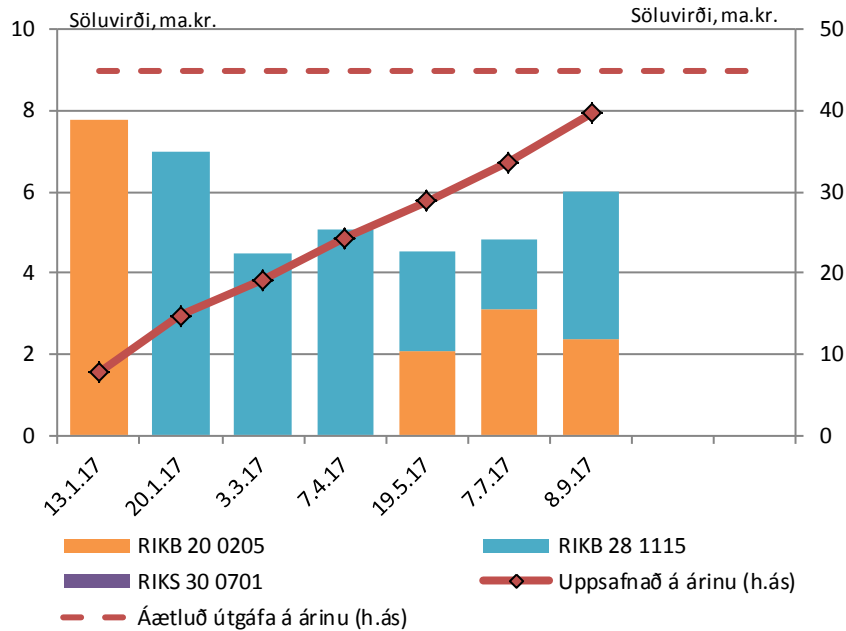


Útboð ríkisbréfa

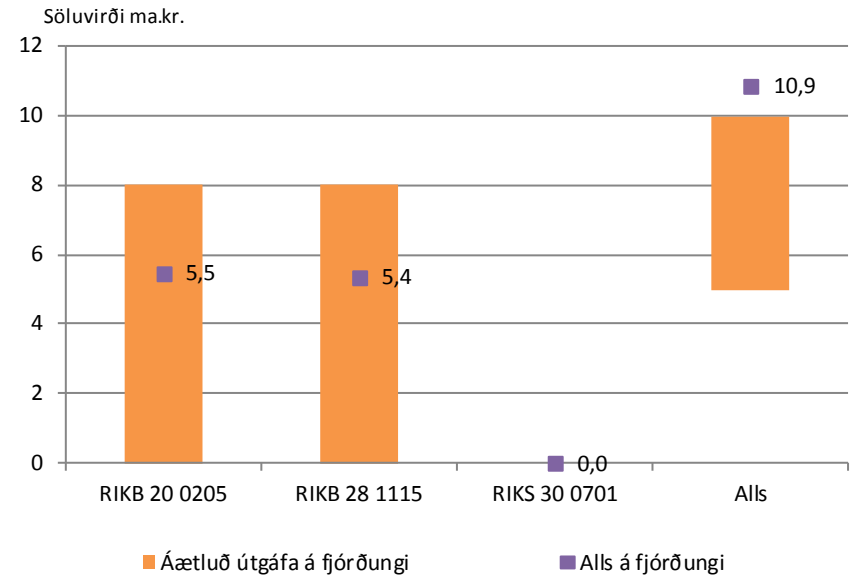
Seinustu útboð		Tilboð	Samþykkt	Verð	Krafa
Dags	Flokkur				
8.9.17	RIKB 20 0205	2,3	2,3	102,80	4,97
8.9.17	RIKB 28 1115	4,2	4,0	98,64	5,16
7.7.17	RIKB 20 0205	3,0	3,0	103,46	4,77
7.7.17	RIKB 28 1115	1,7	1,7	101,88	4,78
19.5.17	RIKB 20 0205	5,1	2,0	103,60	4,79
19.5.17	RIKB 28 1115	7,9	2,4	102,50	4,71
7.4.17	RIKB 28 1115	8,3	5,1	100,60	4,93

Að nafnvirði (ma.kr.) Heimild: Lánamál Ríkisins

Útboð á árinu m.v. ársáætlun



Útboð á 3. ársfj. m.v. ársfjórðungsáætlun

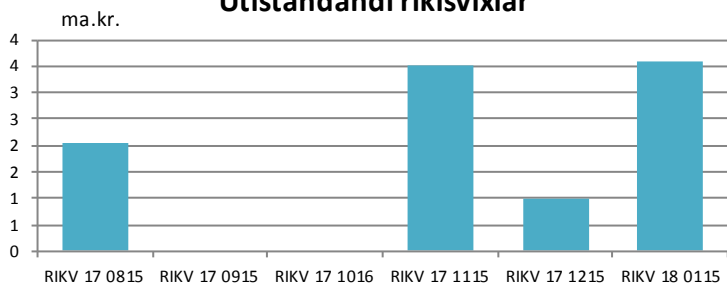


Útboð ríkisvixla

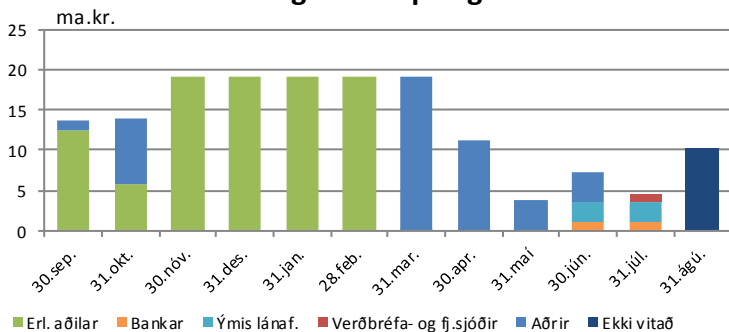
dags	3 mán. víxl			6 mán. víxl		
	Tilboð	Samþykkt	Krafa	Tilboð	Samþykkt	Krafa
13.03.17				0,3	0,0	
11.04.17				0,4	0,0	
10.05.17				3,7	3,5	4,95
13.06.17				1,2	1,0	4,70
13.07.17				6,8	3,6	4,50
11.08.17				3,1	1,3	4,48

Heimild: Lánamál Ríkisins

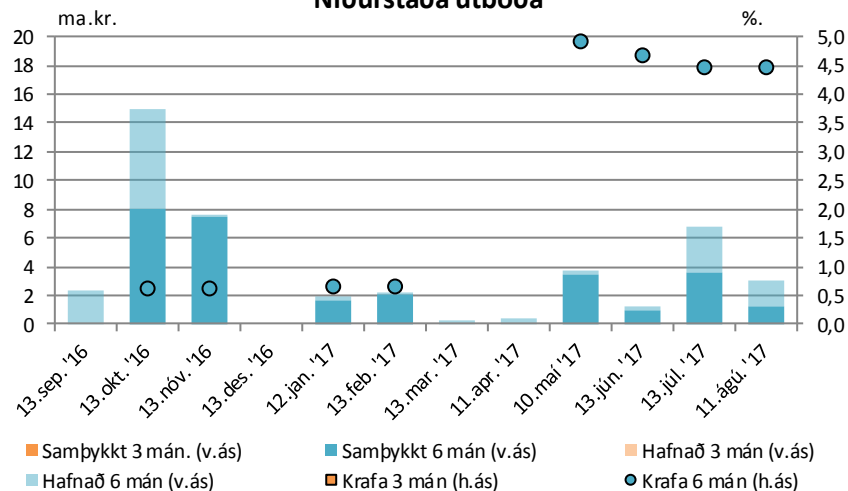
Útistandandi ríkisvixlar



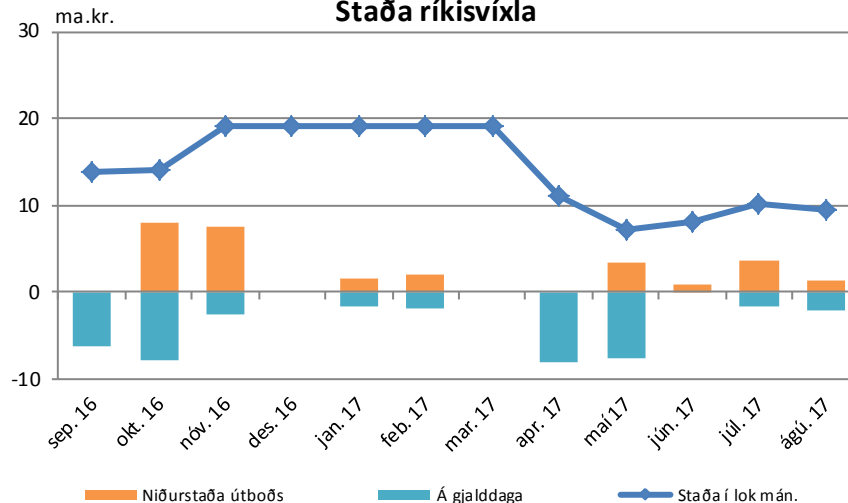
Eigendaskipting



Niðurstaða útboða



Staða ríkisvixla



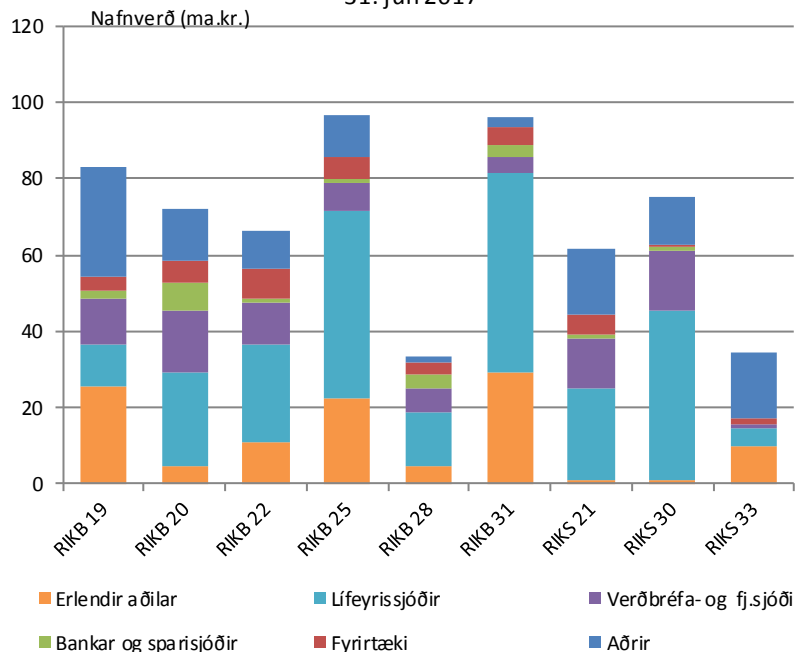
Eigendaskipting ríkisbréfa

	Eigendaskipting (ma.kr.)									Alls
	RIKB 19	RIKB 20	RIKB 22	RIKB 25	RIKB 28	RIKB 31	RIKS 21	RIKS 30	RIKS 33	
Erlendir aðilar	25,3	4,4	10,7	22,4	4,6	29,2	0,8	1,1	9,6	108,1
Lífeyrissjóðir	11,3	25,0	25,7	49,0	14,1	52,2	24,1	44,5	4,8	250,6
Verðbréfa- og fj.sjóðir	11,8	16,1	11,1	7,4	6,2	4,7	13,1	15,4	1,2	86,8
Bankar og sparisjóðir	2,0	7,1	1,2	1,3	3,7	2,8	0,9	1,1	0,0	20,1
Bankar í slitameðferð	4,0	6,2	7,5	5,6	3,0	4,9	5,2	0,6	1,4	38,4
Aðrir	28,9	13,6	10,4	11,3	1,6	2,3	17,3	12,6	17,1	115,3
Nafnverð alls (ma.kr.)	83,4	72,4	66,6	96,9	33,2	96,0	61,4	75,3	34,2	619,4

Heimild: Lánamál ríkisins

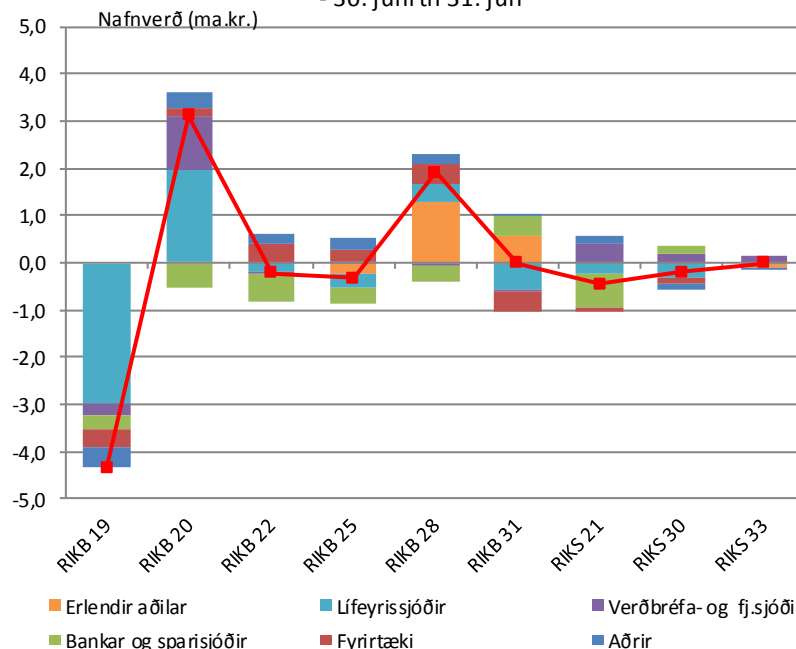
Eigendur ríkisverðbréfa

-31. júlí 2017



Breyting milli mánaða

- 30. júní til 31. júlí

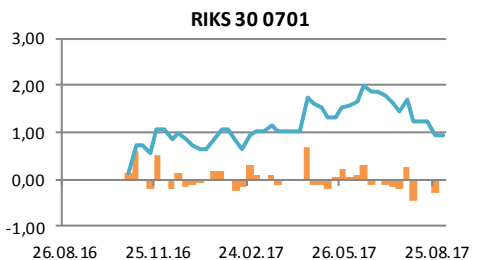
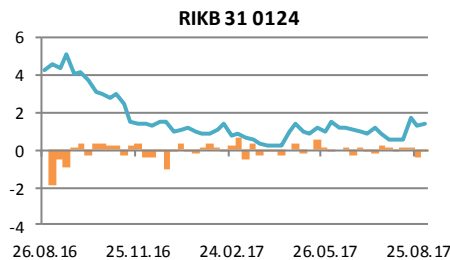
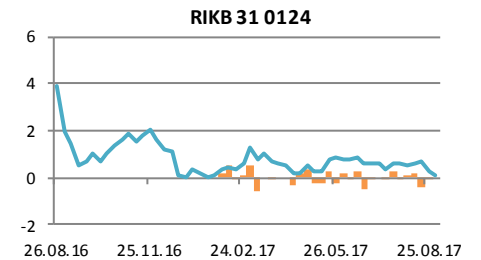
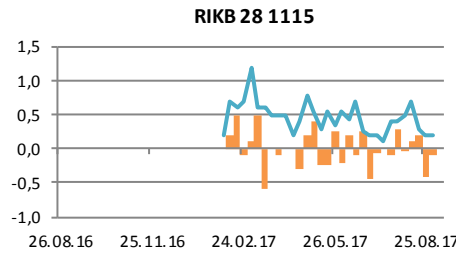
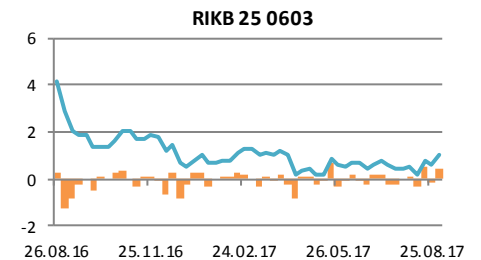
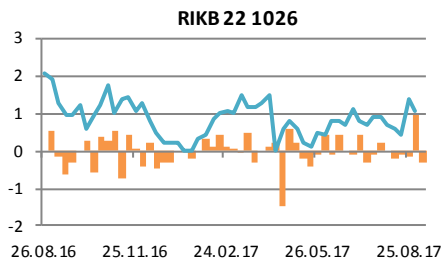
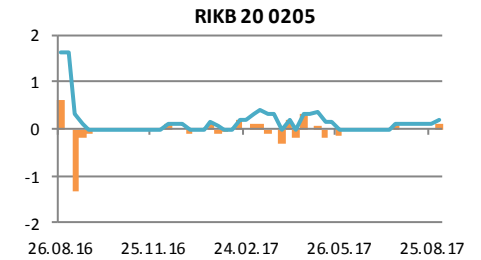
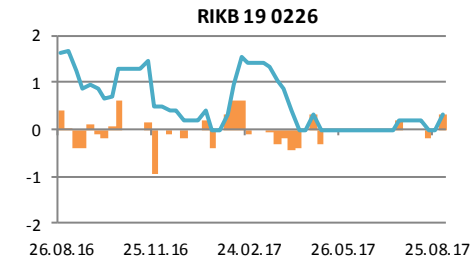
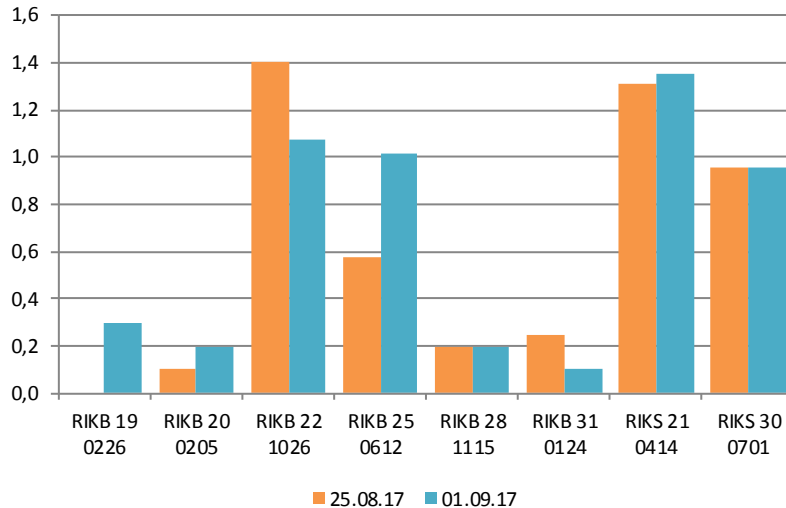


Staða verðbréfalána

Flokkur	Nafnverð (m.kr.)	Breyting síðan				
		1V	4V	12V	26V	52V
RIKB 19 0226	0,0	0,0	-0,2	0,0	-1,4	-1,7
RIKB 20 0205	0,1	0,0	0,0	0,1	-0,1	-1,5
RIKB 22 1026	1,4	1,0	0,5	1,0	0,4	-0,6
RIKB 25 0612	0,6	-0,2	0,2	0,0	-0,7	-3,6
RIKB 28 1115	0,2	-0,1	-0,2	-0,4	-0,5	0,2
RIKB 31 0124	0,3	-0,5	-0,4	-0,6	-0,4	-3,7
RIKS 21 0414	1,3	-0,4	0,8	-0,1	0,6	-2,9
RIKS 30 0701	1,0	-0,3	-0,7	-0,6	0,0	1,0

Heimild: Lánamál Ríkisins

Breyting milli vikna



Breyting milli vikna

Útistandandi



Innihald og form skjals þessa er unnið af starfsmönnum Hagfræðideildar Landsbankans hf. (hagfraedideild@landsbankinn.is) og byggist á aðgengilegum opinberum upplýsingum á þeim tíma sem greiningin var unnin. Mat á þeim upplýsingum endurspeglar skoðanir starfsmanna Hagfræðideildar Landsbankans á þeim degi þegar greiningin er dagsett, en þær geta breyst án fyrirvara.

Landsbankinn hf. og starfsfólk hans taka ekki ábyrgð á viðskiptum sem byggð eru á þeim upplýsingum og skoðunum sem hér eru settar fram.

Bent skal á að Landsbankinn hf. getur á hverjum tíma haft beinna eða óbeinna hagsmuna að gæta, ýmist sjálfur, dótturfélög hans eða fyrir hönd viðskiptamanna, s.s. sem fjárfestir, lánardrottinn eða þjónustuaðili. Greiningar eru engu að síður unnar sjálfstætt af Hagfræðideild Landsbankans og innan Landsbankans eru í gildi reglur um aðskilnað starfssviða sem eru aðgengilegar á vef bankans.

